


Australian Opal Mines (Murray) <murray@AustralianOpalMines.com>   
To: "Heather BAKER (work)" <heather@australianopalmines.com>  
Greens but some other colours spherical focal bead OFFER 21 Aug 2014

August 21, 2014 1:31 AM

32 Attachments, 767 KB

Hi Folks

No doubt you will remember the beautiful focal beads my daughter Kirsty wears, see first photo below, Kirsty was lucky in that I let her select from some of the best beads we have ever cut. Today we send you a selection of more commercial spheres that can be used as focal beads or even made as earrings and for you who understand exotica, I am sure there are some beads here that would make wonderful rings.

The ones that particularly take my eye and best value are:

IMG\_0832 Mintubi pair 9mm round with natural flaws \$199.50 - although this gorgeous pair of beads may have natural flaws, the flaws can hardly be seen, will not break and don't detract from the beads at all

IMG\_7727 Lambina semi black earrings pair 11mm round \$575 - will make a gorgeous single pendant

IMG\_3023-5 Lambina dark base 16mm round \$696 - are very bright and going to make exquisite earrings.

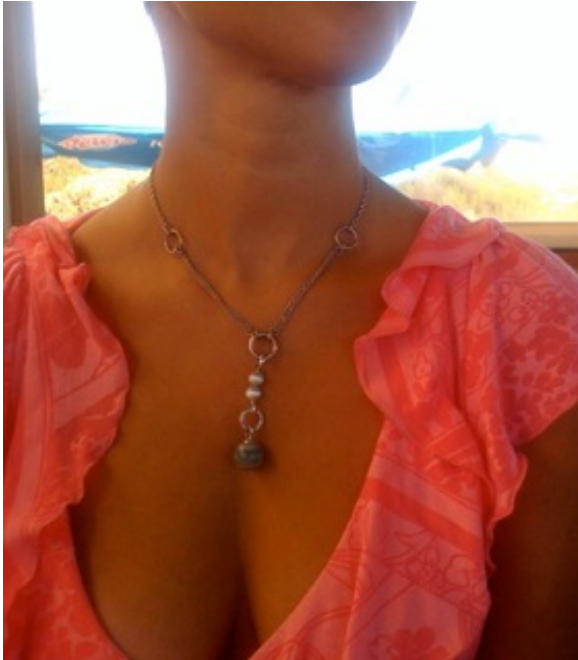
We hope you enjoy our Offer and we look forward to hearing from you.

Regards

Murray

1. \$30/ct IMG\_2485 Andamooka 8, 10, 12, 13mm rounds \$30/ct - will split (6 remaining)
2. \$77.40 IMG\_1286 Andamooka 11mm round pair 12.9cts
3. \$80 IMG\_1187 Mixed 7-11mm round beads 50.95cts
4. \$92.60 IMG\_1660 Mintubi 4-10mm round loose beads \$4/ct 23.15cts
5. \$112 IMG\_0131 Lambina Amber almost translucent nice greens, Golds Blues 12mm round 9.36cts
6. \$116 IMG\_9280 Andamooka Matrix Opal 12mm round pair \$6/ct 19.4cts
7. \$120 IMG\_5099 12mm round \$12/ct 10cts
8. \$120 IMG\_9238 Andamooka Matrix Opal Greens & Reds 12mm round \$12/ct 10cts
- 9-10. \$153 IMG\_1410 Lambina 11mm round loose bead 7.65cts
11. \$175 IMG\_0834 Mintubi 9mm round pair natural flaws \$25/ct 7cts
12. \$190 IMG\_9248 Andamooka Matrix Opal 12mm round (2) \$10/ct 19cts
13. \$199.50 IMG\_0832 Mintubi 9mm round pair natural flaws \$25/ct 7.98cts
14. \$212 IMG\_1655 Lambina (2) matching stones 11mm & 15mm round 25.6cts
15. \$235 IMG\_9531 Andamooka Matrix Opal 9.5-10.5mm round loose beads 8.5"/21cm 117cts
16. \$245 IMG\_9523 Andamooka Matrix Opal 10mm round loose beads (20) 8"/20cm 121.5cts
17. \$288 IMG\_2742 Andamooka 5-9mm round 96cts treated
18. \$294 IMG\_0737 Andamooka 9mm round pair \$35/ct 8.4cts
19. \$318 IMG\_3929 Lambina 13.5mm round 12.73cts
20. \$412 IMG\_6494 Mintubi 2 (10mm), 1 (11mm) round \$25/ct some have natural flaws 16.5cts

- 21. \$495 IMG\_9201 Mintubi Reds & Greens 8mm round (1), 9mm round (3) 14.6cts
- 22. \$497 IMG\_9263 Andamooka Matrix Opal 15mm round (4) \$7/ct 71cts - you may select
- 23. \$575 IMG\_7727 Lambina semi Black 11mm round pair earrings 13.2cts
- 24. \$643 IMG\_9272 Andamooka Matrix Opal 13mm round (8) \$7/ct 91.9cts - you may select
- 25-26. \$696 IMG\_3023 Lambina Dark Base 16mm round 23.2cts
- 27-29. \$956 IMG\_1470 Lambina Gem 16mm round loose bead 21.25cts
- 30-31. \$1,174 IMG\_1517 Lambina pair 14mm rounds 29.36cts



Kirsty's bead



- 1. \$30/ct IMG\_2485 Andamooka 8, 10, 12, 13mm rounds \$30/ct - will split (6 remaining)



2. \$77.40 IMG\_1286 Andamooka 11mm round pair 12.9cts



3. \$80 IMG\_1187 Mixed 7-11mm round beads 50.95cts





4. \$92.60 IMG\_1660 Mintubi 4-10mm round loose beads \$4/ct 23.15cts



5. \$112 IMG\_0131 Lambina Amber almost translucent nice greens, Golds Blues 12mm round 9.36cts



6. \$116 IMG\_9280 Andamooka Matrix Opal 12mm round pair \$6/ct 19.4cts

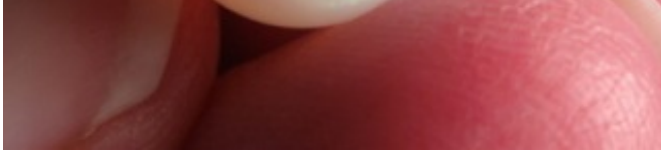


7. \$120 IMG\_5099 12mm round \$12/ct 10cts

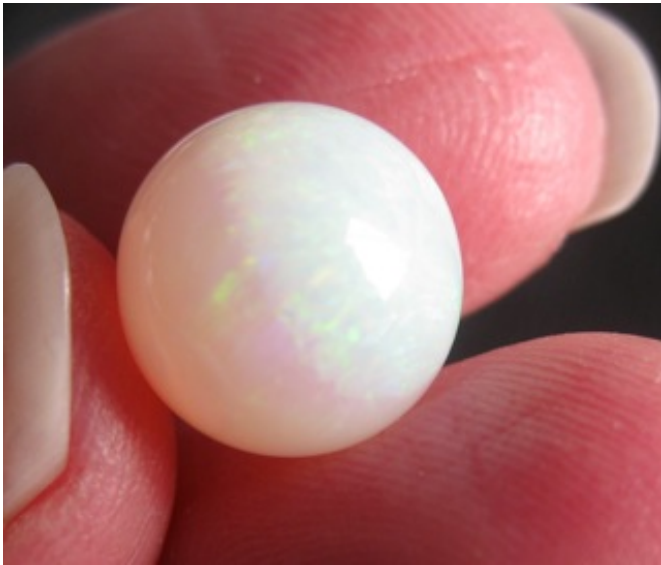


8. \$120 IMG\_9238 Andamooka Matrix Opal Greens & Reds 12mm round \$12/ct 10cts





9. \$153 IMG\_1410 Lambina 11mm round loose bead 7.65cts



10. \$153 IMG\_1420 Lambina 11mm round loose bead 7.65cts



11. \$175 IMG\_0834 Mintubi 9mm round pair natural flaws \$25/ct 7cts





12. \$190 IMG\_9248 Andamooka Matrix Opal 12mm round (2) \$10/ct 19cts



13. \$199.50 IMG\_0832 Mintubi 9mm round pair natural flaws \$25/ct 7.98cts



14. \$212 IMG\_1655 Lambina (2) matching stones 11mm & 15mm round 25.6cts



15. \$235 IMG\_9531 Andamooka Matrix Opal 9.5-10.5mm round loose beads 8.5"/21cm 117cts



16. \$245 IMG\_9523 Andamooka Matrix Opal 10mm round loose beads (20) 8"/20cm 121.5cts





17. \$288 IMG\_2742 Andamooka 5-9mm round 96cts treated



18. \$294 IMG\_0737 Andamooka 9mm round pair \$35/ct 8.4cts



19. \$318 IMG\_3929 Lambina 13.5mm round 12.73cts



20. \$412 IMG\_6494 Mintubi 2 (10mm), 1 (11mm) round \$25/ct some have natural flaws 16.5cts



21. \$495 IMG\_9201 Mintubi Reds & Greens 8mm round (1), 9mm round (3) 14.6cts





22. \$497 IMG\_9263 Andamooka Matrix Opal 15mm round (4) \$7/ct 71cts - you may select

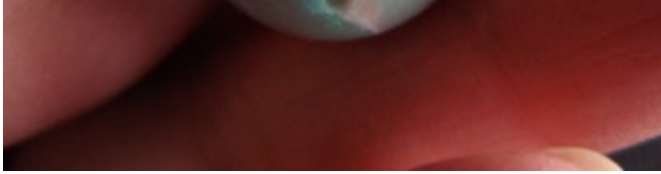


23. \$575 IMG\_7727 Lambina semi Black 11mm round pair earrings 13.2cts



24. \$643 IMG\_9272 Andamooka Matrix Opal 13mm round (8) \$7/ct 91.9cts - you may select





25. \$696 IMG\_3023 Lambina Dark Base 16mm round 23.2cts



26. \$696 IMG\_3025 Lambina Dark Base 16mm round 23.2cts



27. \$956 IMG\_1470 Lambina Gem 16mm round loose bead 21.25cts



28. \$956 IMG\_1472 Lambina Gem 16mm round loose bead 21.25cts



29. \$956 IMG\_4500 Lambina Gem reds, blues, greens & golds 16mm round 21.25cts



30. \$1,174 IMG\_1517 Lambina pair 14mm rounds 29.36cts





31. \$1,174 IMG\_1521 Lambina pair 14mm rounds 29.36cts

Kind regards

Murray Willis

[Murray@AustralianOpalMines.com](mailto:Murray@AustralianOpalMines.com)

<http://www.austopalmines.net.au>

Ph 011 -618 -83324049 Fax 011- 618 - 83329631

To UNSUBSCRIBE, send us an email with the subject: UNSUBSCRIBE